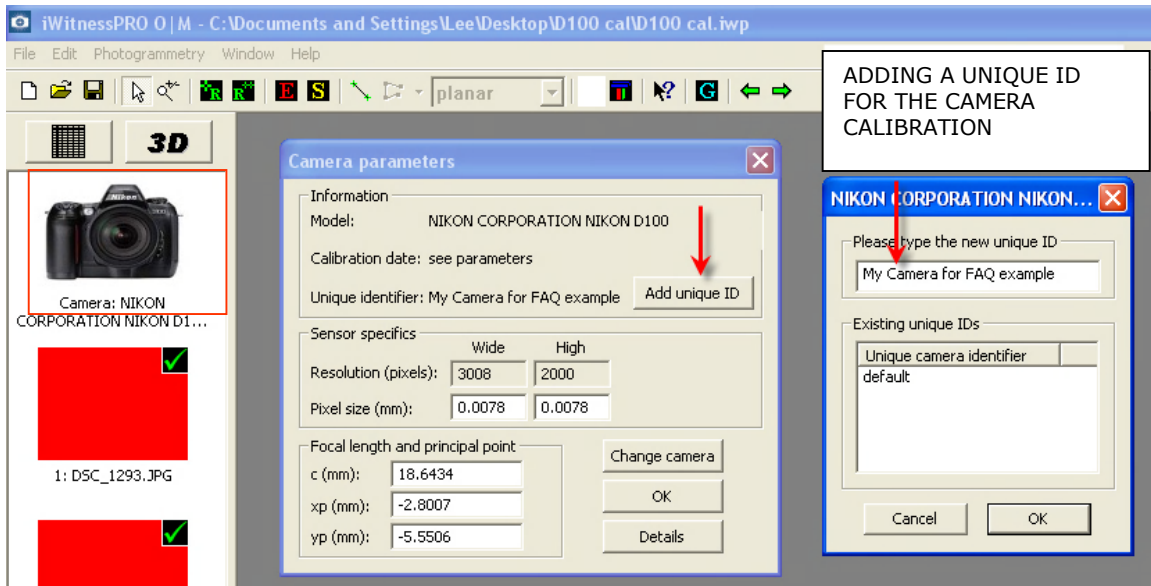


How to add the *iWitness* calibrated camera **UNIQUE ID** from one computer to another computer.

1. During the camera calibration, the user was to add a camera specific **Unique ID**. The below figure illustrates the Unique ID being added via clicking on the camera icon and selecting the **Add unique ID** Button; (in this example we simply call it "My Camera for FAQ example".) Save the iwp (in this case we call it **D100 cal.iwp**.)



2. After your calibration copy the calibration iwp (i.e. "D100 cal.iwp" in the example above, to the new computer and click the Floppy Disk "Save". This updates the *iWitness* Local Camera Database on the "new" computer.



NOTE: make sure there aren't any other iwp (projects minimized) and that you are only working with this single iwp project, in order to update the computers local camera database.

3. When you start a New Project, the "Select camera..." dialog is now displayed. In this case, the "My Camera for FAQ example" is displayed in the Select camera dialog. Select it (blue highlight) and click "Select". The project will now use the calibration parameters. NOTE: this procedure can be used with ANY iwp that uses the calibration parameters originated by the *initial calibration*.

